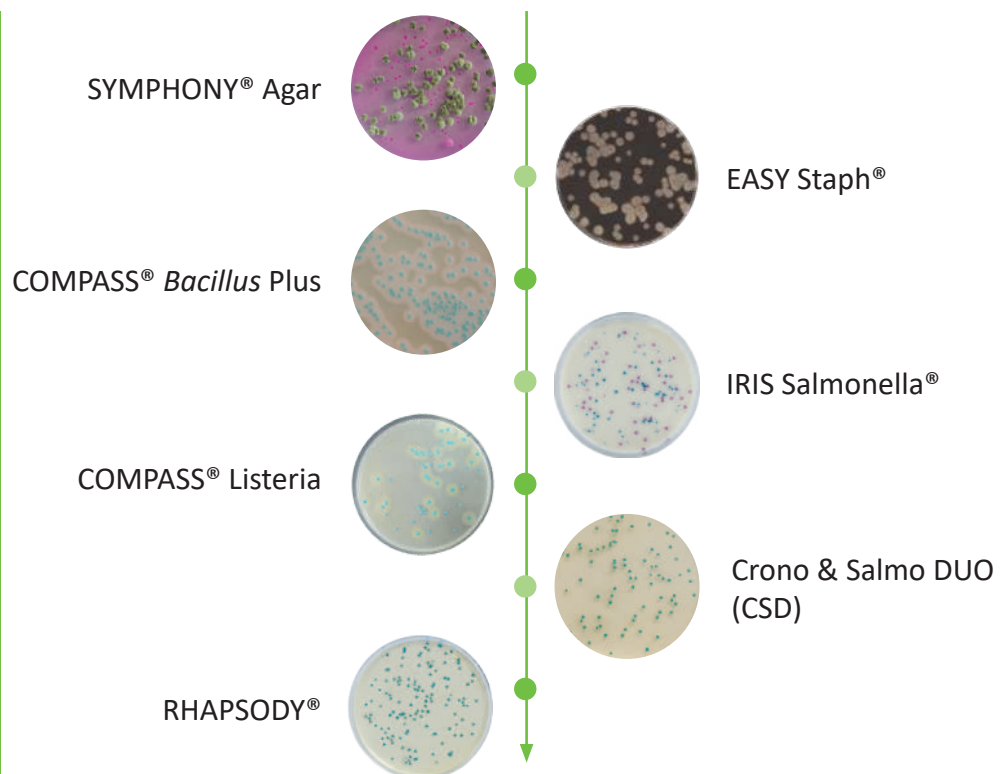
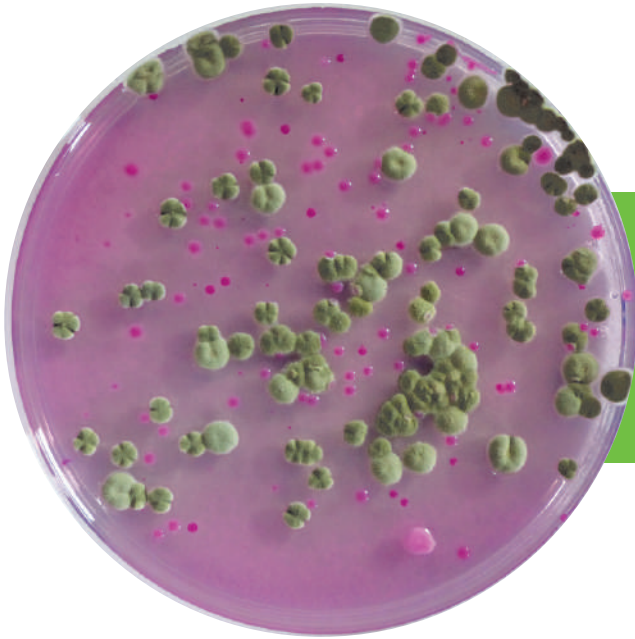


## Biokar 微生物診斷系列

Biokar diagnostics 是 Solbia 集團的一個部門，在微生物診斷方面擁有強大的專業知識。50 年來，始終致力於為實驗室開發、生產和分銷培養基、試劑和補充劑。





## SYMPHONY® Agar

檢測人類和動物食品中的酵母菌和黴菌。

### ■ 效能：

檢測所食品是否含有的酵母菌和黴菌。

### ■ 簡單的判讀：

酵母菌和黴菌的菌落，有明顯區別。

### ■ 快速：

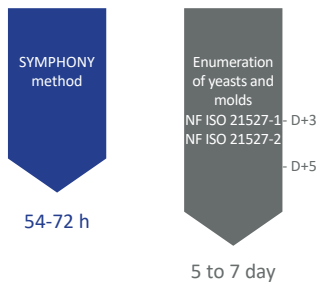
適用所有實驗室的規範。

### ■ 可靠：

COMPASS® Listeria Agar 優秀的呈色效果，不需要二次集菌便可判讀及計數。

### 備註

SYMPHONY® 方法只需 54 小時即獲得判斷結果。



The membrane filtration method can also be used for the analysis of water samples.

① BPW, Tryptone-salt or any other diluent recommended by the corresponding part of NF EN ISO 6887 standard

### 訂購資訊

Ready-to-use medium  
BM20208- 20 Petri dishes Ø90 mm

Ready-to-melt medium  
BM19108- 10 vials of 200 mL

Dehydrated medium  
BK227HA- 500 g vial  
BK227GC- 5 kg drum

### 接種

Spread 0.1 mL on the surface of SYMPHONY® agar plates



(x) g of samples + 9 (x) mL of diluent ①

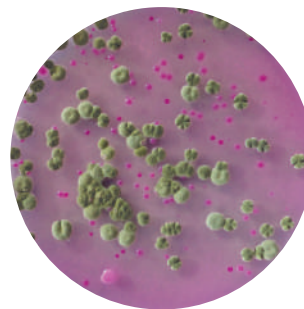
### 接種

Transfer 1 mL to the bottom of empty sterile plates and add approximately 15 mL of SYMPHONY® agar Mix and let solidify

Ⓢ 培養條件 54-72 hr at 25 °C

菌落特徵

D +3



酵母  
邊緣有明確的粉紅色菌落

&

黴菌  
具有不規則邊緣的不同大小和顏色的菌落



## EASY Staph®

用於食品和環境樣品中，檢測葡萄球菌。

### ■ 可靠：

依據 ISO / FDIS 16140-2 標準，通過 AFNOR 認證的驗證方法。

### ■ 效能：

檢測所有凝固酶陽性葡萄球菌，包括產腸毒素菌株 *S. hyicus* 和 *S. intermedius*。

### ■ 簡單、經濟：

被光環包圍的菌落即是含有葡萄球菌，適用於所有食品。

### ■ 快速：

22 小時內可以完判讀及計數。

### 備 註

- 1 Buffer peptone water, tryptone- salt or any other diluent recommended by the corresponding part of NF EN ISO 6887 standard.
- 2 The inoculation may be realized by manual streaking or spiral method in exponential mode with 50 or 100µL.
- 3 Reading may be realized after 22 to 72 hours of incubation for pour plate inoculation and spiral method and 22 to 48 hours for surface inoculation.

EASY Staph®  
Agar

NF EN ISO  
6888-2  
: Horizontal  
method for the  
enumeration  
of coagulase  
positive  
staphylococci

-J+1

-J+2

### 接種

Transfer 0.1 mL of sample onto pre-poured plates of EASY Staph® agar ②



(x) g of samples + 9 (x) mL of diluent ①

### 接種

Transfer 1 mL of sample to the bottom of empty sterile Petri dish and add approximately 15 mL of EASY Staph® agar Mix and let solidify

Ⓢ 培養條件 24 ± 2 hr at 37 ± 1°C

Reading ③ and enumeration of characteristic colonies

### 訂購資訊

#### Surface inoculation

EASY Staph® Agar - Pre-poured  
BM1870820 Petri dishes (Ø90 mm)  
BM19008 120 Petri dishes (Ø90 mm)

#### Pour plate inoculation

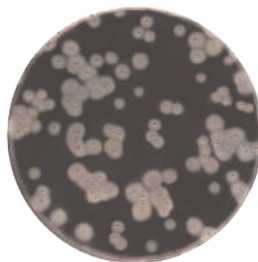
EASY Staph® Agar - Kit  
BT01208- 6 vials of 190 mL of base + 6 vials of supplement qsp 200 mL  
BT01308- 6 vials of 90 mL of base + 6 vials of supplement qsp 100 mL

#### EASY Staph® Agar - dehydrated

BK216HA- 500 g vial

#### EASY Staph® lyophilisate supplement

BS09008- 8 vials qsp 100 mL



Coagulase- positive *Staphylococcus* :  
Colonies surrounded by  
an opaque halo of fibrin

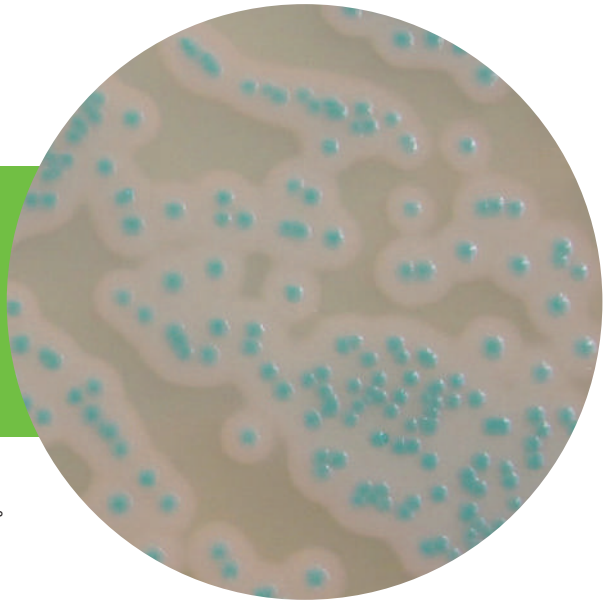


Coagulase- positive *Staphylococcus* :  
Colonies surrounded by  
an opaque halo of fibrin



## COMPASS® *Bacillus Plus*

在 21 小時內，可檢測和計數食物中，是否有蠟狀芽孢桿菌菌種。



### ■ 可靠：

依據 ISO / FDIS 16140-2 標準，通過 AFNOR 認證的驗證方法。

### ■ 簡單：

特有的藍綠色菌落和對次級菌群的出色抑制。

### ■ 效能：

有效的培養，針對蠟狀芽孢桿菌的特異性檢測，包含細胞毒性芽孢桿菌和卵磷脂酶生產弱或陰性的菌株。

### ■ 快速：

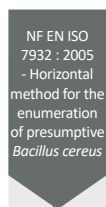
21 小時內完成檢測和計數。

### 備註

- ① BPW, Tryptone-salt or any other diluent recommended by the corresponding part of NF EN ISO 6887 standard.
- ② Prepare COMPASS® *Bacillus Plus* medium with a bottle of base, selective supplement and 10mL sterile supplement.
- ③ Count Petri dishes containing less than 150 characteristic colonies.
- ④ Presence of an opaque halo around *Bacillus cereus* group colonies with phospholipase activity.



1 step  
in 21 h



Confirmation  
- D+1/D+2  
- J+3

2 steps  
in 42 h to 72 h

### 接種

Transfer 0.1 mL onto pre-poured plates of COMPASS® *Bacillus cereus* agar ②



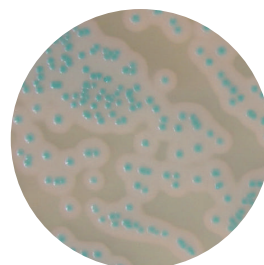
(x) g of samples + 9 (x) mL of diluent ①

### 接種

Transfer 1 mL to the bottom of empty sterile Petri dish and add approximately 15 mL of COMPASS® *Bacillus cereus* ② medium  
Mix and let solidify

⊕ 培養條件 21 ± 27 hr at 30 ± 1°C

Reading and enumeration of characteristic colonies ③



### *Bacillus cereus*

Characteristic colony : pale blue-green to blue-green color, with a diameter > 1 mm ④ for surface inoculation and a diameter > 0.5 mm ④ for pour plate inoculation

### 訂購資訊

#### COMPASS® *Bacillus Plus* Agar

- BM21308 – Petri dishes (Ø 90mm)
- BM13008 – 10 flacons 100 mL (base)
- BK189HA – 500 g bottle

#### Selective supplement

#### for COMPASS® *Bacillus cereus* Agar

- BS06908 – 10 vials qsf 100 mL
- BS08508 – 10 vials qsf 500 mL

#### Sterile egg yolk emulsion

- BS06608 – 10 vials of 50 mL

#### Complete supplement for

#### COMPASS® *Bacillus Plus* Agar coming soon

- BS09808 – 10 vials of 50 mL



## **IRIS Salmonella®**

用於食品和環境樣品中，快速檢測所有沙門氏菌。

### ■ 可靠：

依據 ISO / FDIS 16140-2 標準，通過 AFNOR 認證的驗證方法，超過 25 克的樣品也能檢測。

### ■ 效能：

能檢測所有沙門氏菌。

### ■ 判讀容易：

透明瓊脂和粉紅色 - 洋紅色沙門氏菌菌落與從藍色到深藍色出現的次級菌群之間具有出色的對比度。

### ■ 快速：

配合試劑，可在 37 小時內進行陰性篩查並在兩分鐘內判讀出結果。

### ■ 簡便好操作：

只需一個 IRIS Salmonella® 和含有 supplemented 的填充液，就能適用於所有實驗室。

樣品 ≤ 25



(x) g of sample in 9 (x) mL of *Salmonella* Enrichment medium ②

+

Add selective IRIS *Salmonella*® supplement



Green coloration

④ 培養條件  
16 to 24 hr  
41.5 ± 1°C

樣品 ≤ 25 ①

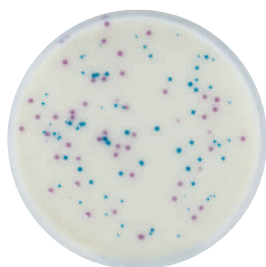
④ 培養條件  
18 to 24 hr  
41.5 ± 1°C

Plate 10 µL on IRIS *Salmonella*® Agar



D+1

D+1



④ 培養條件  
24 to 3 hr  
37 ± 1°C

④ 培養條件  
24 to 3 hr  
37 ± 1°C



Reading and confirmation

Non characteristic colonies :  
ABSENCE of *Salmonella*

Characteristic magenta colonies:  
PRESUMPTIVE PRESENCE of  
*Salmonella*



Latex coagulation test :  
CONFIRM' *Salmonella*

## 備 註

① SIRIS *Salmonella* method is also validated for the detection of *Salmonellae* in samples from 50 g to 375 g in milk powder (including infantile formula with and without probiotics) and from 50 g to 125 g for flours and croquettes in feedstuffs.

② For the samples greater than 25g, preheat the *Salmonella* Enrichment medium at 41.5° C.

*Salmonella* Enrichment and IRIS *Salmonella*® Agar can be stored up to 3 days at 2-8 ° C before plating or reading (except the enrichment for the sample greater than 25 g in feedstuffs).

*Salmonella* Enrichment can be used for the preparation of dilutions.

IRIS *Salmonella*® Agar may be used as the second medium according to NF EN ISO 6579.

## 訂購資訊

### *Salmonella* Enrichment

BK194HA/GC – 500 g bottle/5 kg drum  
BM13608 – 10 vials of 225 mL  
BM13708 – 3 flexible bags 3 L  
BM14408 – 2 flexible bags 5 L

### *Salmonella* Enrichment + Tween®80

BM16308 – 3 flexible bags 3 L  
BM19808 – 2 flexible bags 5 L  
BM21608 – 10 vials of 225 mL

### *Salmonella* Enrichment double-strength buffered

BM20008 – 2 flexible bags 5 L  
BM20108 – 10 vials of 225 mL  
BK225HA/GC – 500 g bottle/5 kg drum

### IRIS *Salmonella*® supplement

BS07808 – 10 vials of 50 mL  
BS07708 – 120 tablets qsp 225 mL  
BS09308 – 120 tablets qsp 90 mL

### IRIS *Salmonella*® Agar

BM16008 – 20 Petri dishes (Ø90mm)  
BM16108 – 120 Petri dishes (Ø90mm)  
BK212HA – 500 g bottle

### CONFIRM' *Salmonella*

BT01108 – Latex agglutination kit  
(50 tests)



## COMPASS® *Listeria*

用於食品和環境樣品中檢測李斯特菌和李斯特菌屬。

### AFNOR 認證的 NF 驗證標誌

AFNOR 認證是法國領先的認證和系統、服務、產品和能力評估機構，也是全球一流的領導者之一。AFNOR 認證提供超過 500 種服務解決方案的組合。AFNOR 認證擁有法國國家和國際認證，通過五大洲的 27 個機構和 13 個法國地區代表團提供模範外展服務。它從 1500 名合格的審計員那裡獲得支持，以滿足遍布全球 60,000 個站點的客戶群的需求。AFNOR 認證管理著歐洲領先的替代方法認證計劃，採用 NF 驗證標誌。NF Validation 計劃已獲得 EA（歐洲認證）正式成員 Cofrac 的認證。AFNOR 認證一直與其技術委員會和專家實驗室合作，以實施有關歐洲微生物標準的新要求，並考慮與其他國際驗證計劃（如 AOAC-PTM）的協調。ISO 16140-2 中的新要求最遲應在已獲得認證的套件的 NF 驗證更新期間以及現在對於請求驗證的新套件實施。

#### 選擇 AFNOR 認證，等於選擇下列：

- 近 30 年的微生物快速檢測試劑盒認證經驗。
- 該領域的專家網絡、獨立的實驗室和合格的審核員。
- 一個公認的歐洲品牌，享譽國際；
- 一個獨立、稱職且可靠的機構，獲得 Cofrac 的 NF VALIDATION 認證活動認證（認證編號 5-0030。範圍可在法國認證機構的網站 <http://www.cofrac.fr> 上找到）。

#### ■ 可靠：

依據 NF EN ISO 16140-2 和 NF EN ISO 11290-1/A1 和 NF EN ISO 11290-2/A1 標準 (Ottaviani Agosti Agar) 經 AFNOR 認證驗證的方法。

#### ■ 快速：

40 小時內篩選陰性，6 小時內確認單核細胞增生李斯特菌。

#### ■ 簡便、經濟：

適用所有實驗室的規範。

#### ■ 效能：

COMPASS® *Listeria* Agar 優秀的呈色效果，不需要二次集菌便可判讀及計數。

#### ■ 簡單的判讀：

單核細胞增生李斯特菌菌落（帶光暈的藍色）和李斯特菌菌落之間的明顯區別。（藍色無暈）

## 舉例

(x) g of sample in 9 (x) mL of Half-Fraser Broth ①



Plate 0.1 mL for surface inoculation or 1 mL for pour plate inoculation on *COMPASS® Listeria Agar*

## 檢測

⊕ 培養條件

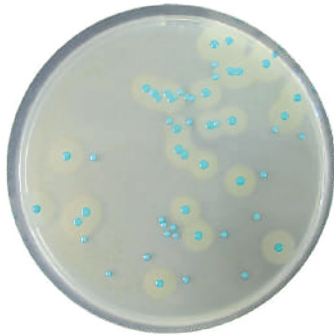
22-28hr ③, 30 ± 1 °C 或  
18-24hr ③, 37 ± 1 °C ④

## 備註

- ① Suspension may also be done in buffered peptone water for the enumeration.
- ② A first reading may be done after 24 hours of incubation for highly contamination samples, however the result must be given after 48 hours. The agar may be kept up to 48 hours at 2-8°C before reading.
- ③ Enrichment broth may be kept up to 72 hours at 2-8 °C before plating.
- ④ Half Fraser broth must be preheated.
- ⑤ Reading may be done after 22 hours of incubation. It can be prolonged to 48 hours for organization reasons of laboratory. The agar may be kept up to 48 hours at 2-8°C before reading.
- ⑥ Use a biochemical identification gallery, taken from one isolated colony, without transplanting on nutrient agar.

培養條件 ⊕

48 ± 2 hr ②  
37 ± 1°C



⊕ 培養條件

24 ± 2 hr ③  
37 ± 1°C

## 訂購資訊

### Half-Fraser Broth (Ready-to-use)

BM01608 – 10 vials of 225 mL  
BM13308 – 3 flexible bags 3 L  
BM13408 – 2 flexible bags 5 L

### Half-Fraser Broth (base II + suppl.)

BK133HA – 500 g ; BK133GC – 5 kg  
BS03008 – 10 vials qsp 500 mL  
BS03208 – 8 vials qsp 2.25 L

### Half-Fraser Broth (base + suppl.)

BK173HA – 500 g ; BK173GC – 5 kg  
BS05908 – 10 vials of 90 mL  
BS06208 – 7 tubes of 10 mL

### COMPASS® *Listeria Agar*

BM12308 – 20 Petri dishes (Ø90 mm)  
BM12408 – 120 Petri dishes (Ø90 mm)

### COMPASS® *Listeria Agar Kit*

BT00808 – 6 vials 200 mL, 6 vials of selective suppl. qsp 200 mL, 6 vials of enrichment suppl. qsp 200 mL

### COMPASS® *Listeria Agar* (base + suppl.)

BK192HA – 500 g bottle  
BS07008 – Enrichment suppl. 8 vials qsp 1 L  
BS07108 – Selective suppl. 8 vials qsp 1 L

### CONFIRM' *L. mono* Agar

BM13908 – 10 Petri dishes (Ø90mm)

### CONFIRM' *L. mono* Broth

BM16208 – 18 vials

### PALCAM Agar

BK145HA – 500 g bottle  
BS00408 – Suppl. 10 vials qsp 500 mL  
BS04908 – Suppl. 8 vials qsp 2.5 L  
BM02008 – 20 Petri dishes (Ø90 mm)

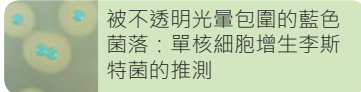
### Microgen *Listeria ID System Kit*

BT01408 – Complete kit for 20 tests

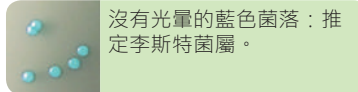
D+2

Reading and/or enumeration of characteristic colonies

D+2



被不透明光暈包圍的藍色菌落：單核細胞增生李斯特菌的推測



沒有光暈的藍色菌落：推定李斯特菌屬。

確認試驗：特徵菌落重劃 ⑥

CONFIRM' *L. mono* Agar  
(一個板上最多6個條紋)

培養條件 ⊕

24 ± 3 hr ·  
37 ± 1°C



特徵條紋·單核細胞增生李斯特菌

CONFIRM' *L. mono* Broth

培養條件 ⊕

6 hr · 37 ± 1°C



單核細胞增生李斯特菌的存在

PALCAM Agar  
(一個板上最多接種15個)

培養條件 ⊕

24 ± 3 hr ·  
37 ± 1°C



李斯特菌屬的黑暈特徵。





## Crono & Salmo DUO (CSD)

用於含有或不含益生菌的奶粉、嬰兒穀物和環境的樣品中，檢測沙門氏菌屬、克羅諾桿菌屬。

### ■ 可靠：

依據 ISO / FDIS 16140-2 標準，通過 AFNOR 認證的驗證方法。

### ■ 簡易、聰明：

同時可以檢測沙門氏菌屬和克羅諾桿菌屬。

### ■ 容易操作：

可以使用 1/4 稀釋液增菌檢測。



## Salmonella spp.

## Cronobacter spp.



(x) g sample in 9 (x) mL or (x) g sample in 3 (x) mL ①  
of Salmonella broth Enrichment ②

+

Introduce 0.1 mL/g sample of  
Supplement Crono & Salmo DUO (CSD)

+

Addition of  $\alpha$ -amylase for cereals (0.1 g/L)



⊕ 培養條件 16 to 22 hr at  $41.5 \pm 1^\circ\text{C}$  for weighs up to 50g

or

⊕ 培養條件 18 to 24 hr at  $41.5 \pm 1^\circ\text{C}$  for weighs from 50 to 375g

J+1



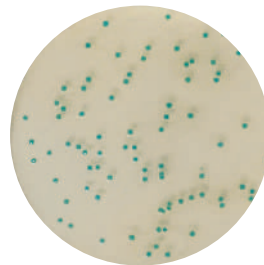
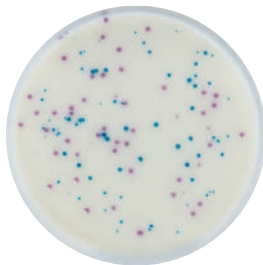
J+1

Inoculating 10  $\mu\text{L}$  on  
IRIS Salmonella® Agar

Inoculating 10  $\mu\text{L}$  sur  
CCI Agar

⊕ 培養條件  
24 to 3 hr  
 $37 \pm 1^\circ\text{C}$

⊕ 培養條件  
24 to 3 hr  
 $41.5 \pm 1^\circ\text{C}$



Characteristic magenta colonies:  
PRESUMPTIVE PRESENCE of  
*Salmonella* ③

Characteristic blue colonies :  
PRESUMPTIVE PRESENCE of  
Cronobacter ③

## 備註

- ① The dilution step can be carried out on the 10th scale for weighing from 10 to 50 g and on the 1/4 scale for weighing from 50 to 375 g. Preheat the broth for weighing from 50 to 375 g.
- ② In the protocol involving a 1/4 dilution, the peptone water buffered «salmonella enrichment» can be used for acidic samples. For samples with fat content  $\geq 20\%$  use Salmonella enrichment + Tween 80.
- ③ Please refer to the data sheet of IRIS Salmonella® Agar and CCI Agar for more information.

## 訂購資訊

### Supplement Crono & Salmo DUO (CSD)

BS09508- 10 vials of 100 mL  
BS09908- Comprimés Qsp 10 g  
BS10008- Comprimés Qsp 25 g

### Salmonella Enrichissement

BK194HA- Bottle 500 g  
BK194GC- Drum 5 kg  
BM13608- 10 vials of 225 mL  
BM13708- 3 flexible bags of 3 L  
BM14408- 2 flexible bags of 5 L

### Salmonella Enrich. double-strength

BM20008- 2 flexible bags of 5 L  
BM20108- 10 vials of 225 mL

### Salmonella Enrich. + Tween 80

BM16308- 3 flexible bags of 3 L  
BM19908- 2 flexible bags of 5 L

### Salmonella Enrich. double-strength + Tween 80

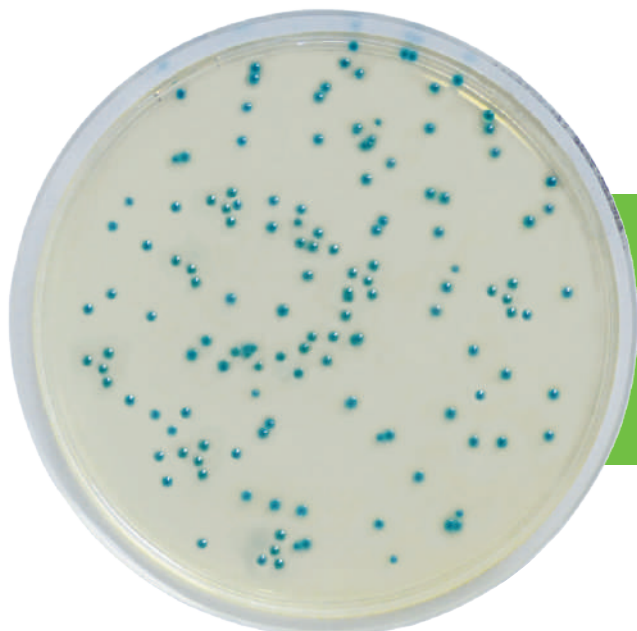
BM22008- 2 poches souples 5 L

### IRIS Salmonella® Agar

BM16008- 20 Petri plates ( $\varnothing 90$  mm)  
BM16108- 120 Petri plates ( $\varnothing 90$  mm)

### CCI Agar

BM15408- 20 Petri plates ( $\varnothing 90$  mm)  
BM22608- 120 Petri plates ( $\varnothing 90$  mm)



## RHAPSODY®

檢測食品和生產區環境中的 *Pseudomonas* spp.。

### ■ 可靠：

依據 ISO / FDIS 16140-2 標準，通過 AFNOR 認證的驗證方法。

### ■ 效能：

檢測所的 *Pseudomonas* spp 並且抑制其他菌生長。

### ■ 容易判讀：

*Pseudomonas* spp 呈現藍色至藍綠色菌落。

### ■ 快速：

僅需 48 小時即可完成檢測和計數。

### 備 註

With RHAPSODY Agar® get result in 2 days and eliminate the confirmation tests specified on the standards.

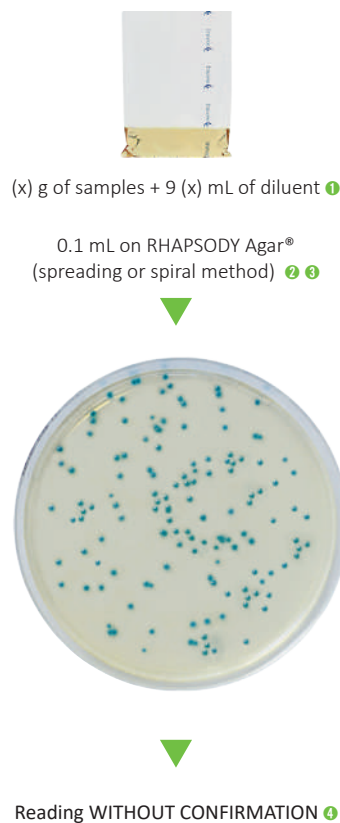
RHAPSODY  
Agar®  
1 step  
in 48 hr

NF EN ISO 13720: 2010 - Meat and meat products  
ISO/TS 11059: 2009 - Milk and milk products - D+2  
Confirmation - D+4/ D+5  
2 steps  
in 4 to 5 D

- ① BPW, Tryptone-salt or any other diluent recommended by the corresponding part of NF EN ISO 6887 standard.
- ② The enumeration limit can be reduced by a factor of 10 by inoculating 1 mL onto the surface of 3 Petri dishes of 90 mm diameter.
- ③ The membrane filtration method may be used for environmental samples (out of validation fields).
- ④ Reading can be realized after 45 to 72 hours of incubation.

⊕ 培養條件  
48 ± 3 hr  
30 ± 1 °C

D + 2



Enumeration of BLUE to BLUE-GREEN colonies of *Pseudomonas* spp.

### 訂購資訊

RHAPSODY Agar® pre-poured  
BM16708 – 20 Petri dishes (∅90 mm)